

Red River Gorge-Daniel Boone Planning Study Powell, Wolfe & Menifee Counties

Socioeconomic Report

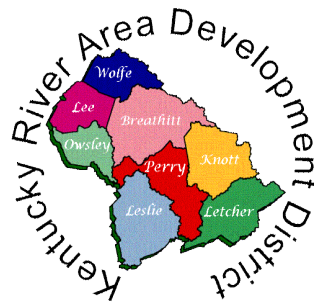
FINAL

June 2022

Prepared for
Kentucky Transportation Cabinet (KYTC) – Division of Planning



Prepared by
Kentucky River Area Development District



Contents

Introduction	3
What is Environmental Justice?	4
Methodology.....	5
Project Area – Red River Gorge-Daniel Boone Forest Planning Study.....	6
Study Findings and Census Data Analysis	8
Population by Persons of Racial Minority Origin	8
Population by Persons Age 65 Years and Older.....	10
Population by Persons Below Poverty Level	12
Population by Disability Status	14
Population by Persons with Limited English Proficiency	16
Conclusion.....	18
Appendix: Methodology from KYTC.....	19

Introduction

This report presents an overview of the findings for selected socioeconomic characteristics in the Red River Gorge-Daniel Boone Forest Planning Study. Purpose of the study is to find ways to help improve traffic flow through the Red River Gorge area. The study will focus on the “Gorge Loop” that includes segments of KY 15, KY 11, KY 715 and KY 77 in the counties of Powell, Wolfe and Menifee.

The information in this report outlines 2016-2020 American Community Survey (ACS) statistics in and near the project area using tables, charts, and maps. The data presented in this document is intended to highlight areas of concern that will require additional analysis should any project be advanced to future phases. Statistics are provided for minority, elderly, poverty status, limited English proficiency (LEP), and disabled populations for the nation, state, counties and block groups located within the project area.

This information is intended to aid the Kentucky Transportation Cabinet (KYTC) in making informed and prudent transportation decisions in the project area, especially with regard to the requirements of *Executive Order 12898: Federal Actions to Address Environmental Justice in Minority Populations and Poverty status, Populations* (signed February 11, 1994). Executive Order 12898 states:

“...each Federal agency shall make achieving environmental justice part of its mission by identifying and addressing, as appropriate, disproportionately high and adverse human health or environmental effects of its policies, and activities on minority populations and poverty status, populations...”

The planning study area is composed of the following Census Tract (CT) Block Groups (BG):

- Powell County, Census Tract 9701.01, Block Group 2
- Powell County, Census Tract 9701.02, Block Group 1
- Wolfe County, Census Tract 9302, Block Group 1
- Wolfe County, Census Tract 9302, Block Group 2
- Menifee County, Census Tract 9601, Block Group 2
- Menifee County, Census Tract 9602, Block Group 2

What is Environmental Justice?

The U.S. Department of Transportation (DOT) outlines three primary Environmental Justice Concepts as:

1. To avoid, minimize, or mitigate disproportionately high and adverse human health or environmental effects, including social and economic effects, on minority populations and poverty status, populations.
2. To ensure the full and fair participation by all potentially affected communities in the transportation decision-making process.
3. To prevent the denial of, reduction in, or significant delay in the receipt of benefits by minority population and poverty status, populations.

The U.S. DOT order defines minority as:

1. Black (a person having origins in any of the black racial groups of Africa);
2. Hispanic (a person of Mexican, Puerto Rican, Cuban, Central or South American, or other Spanish culture or origin, regardless of race);
3. Asian American (a person having origins in any of the original peoples of the Far East, Southeast Asia, the Indian subcontinent, or the Pacific Islands); or
4. American Indian and Alaskan Native (a person having origins in any of the original people of North America and who maintains cultural identification through tribal affiliation or community recognition).

A minority population is “any readily identifiable groups of minority persons who live in geographic proximity, and if circumstances warrant geographically dispersed/transient persons...”

Low-income, is defined in U.S. DOT Order (5610.2) as “a person whose median household income is at or below the Department of Health and Human Services (HHS) poverty guidelines.” A low-income, population is “any readily identifiable group of low-income, persons who live in geographic proximity, and, if circumstances warrant, geographically dispersed/transient persons...”

A disproportionately high and adverse effect on a minority or low-income population means an adverse effect that:

1. Is predominately borne by a minority population and/or low-income population or
2. Will be suffered by the minority population and/or low-income population and is appreciably more severe or greater in magnitude than the adverse effect that will be suffered by the non-minority population and/or non-low-income population.

Elderly and disabled populations (also used in this analysis) are not specifically recognized under the definition of an Environmental Justice community. However, the U.S. DOT specifically encourages the early examination of potential population of the elderly, children, disabled, and other populations protected by the Title VI of the Civil Rights Act of 1964 and related nondiscrimination statuses.

Limited English proficiency (LEP) is a term used in the United States that refers to a person who is not fluent in the English language, often because it is not their native language. Both LEP and English-language learner (ELL) are terms used by the Office for Civil Rights, a sub-agency of the U.S. Department of Education.

Methodology

The data was collected using the method outlined by the KYTC document “Methodology for Assessing Potential Environmental Justice Concerns for KYTC Planning Studies”. The demographics of the affected area should be defined using U.S. Census Bureau data and the percentages for minorities, poverty status, elderly, LEP, and disabled populations should be compared to the Census tracts and block groups, the county as a whole, the entire state and the United States.

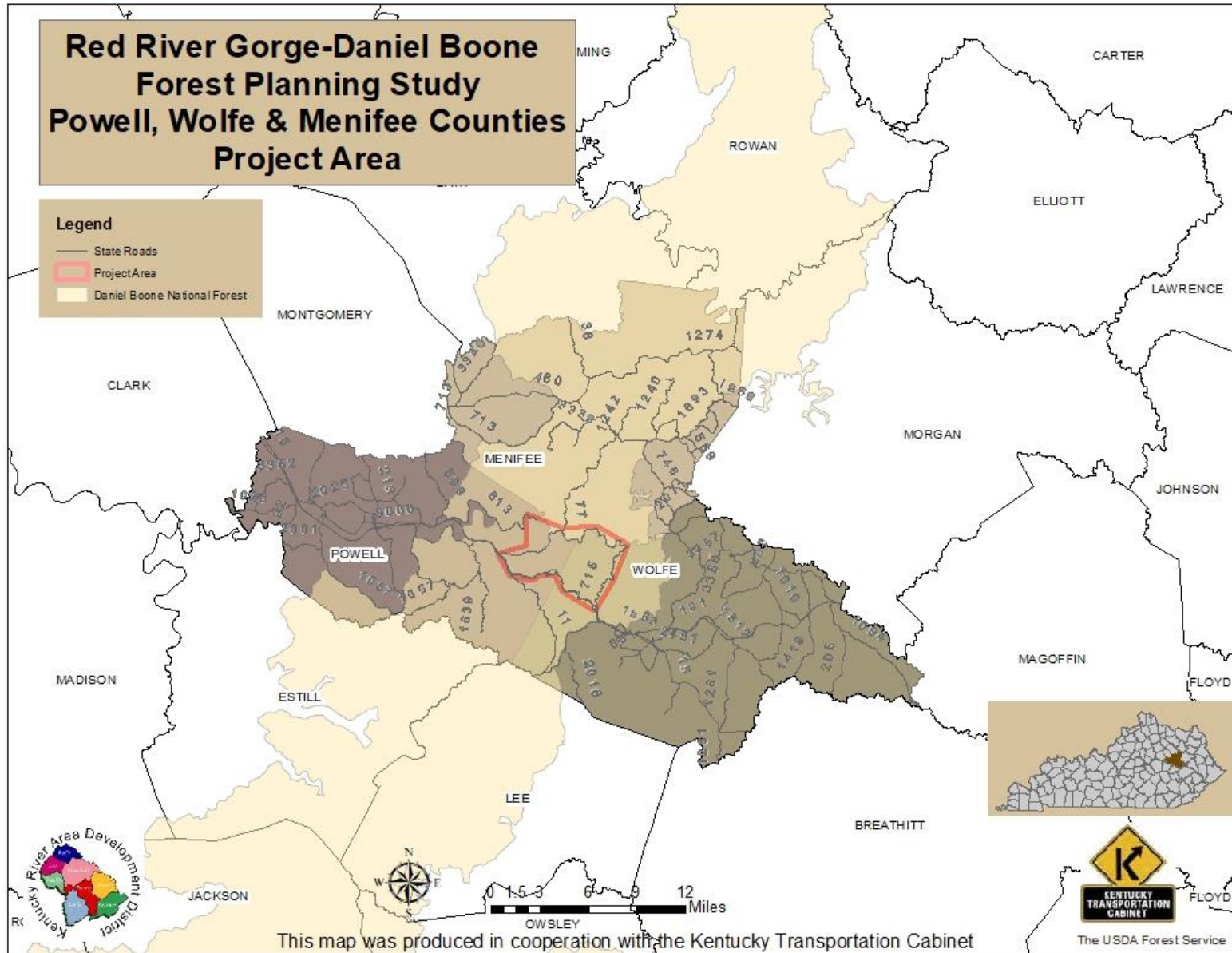
The primary source of data for this report is the 2016-2020 U.S. Census Bureau American Community Survey including tables:

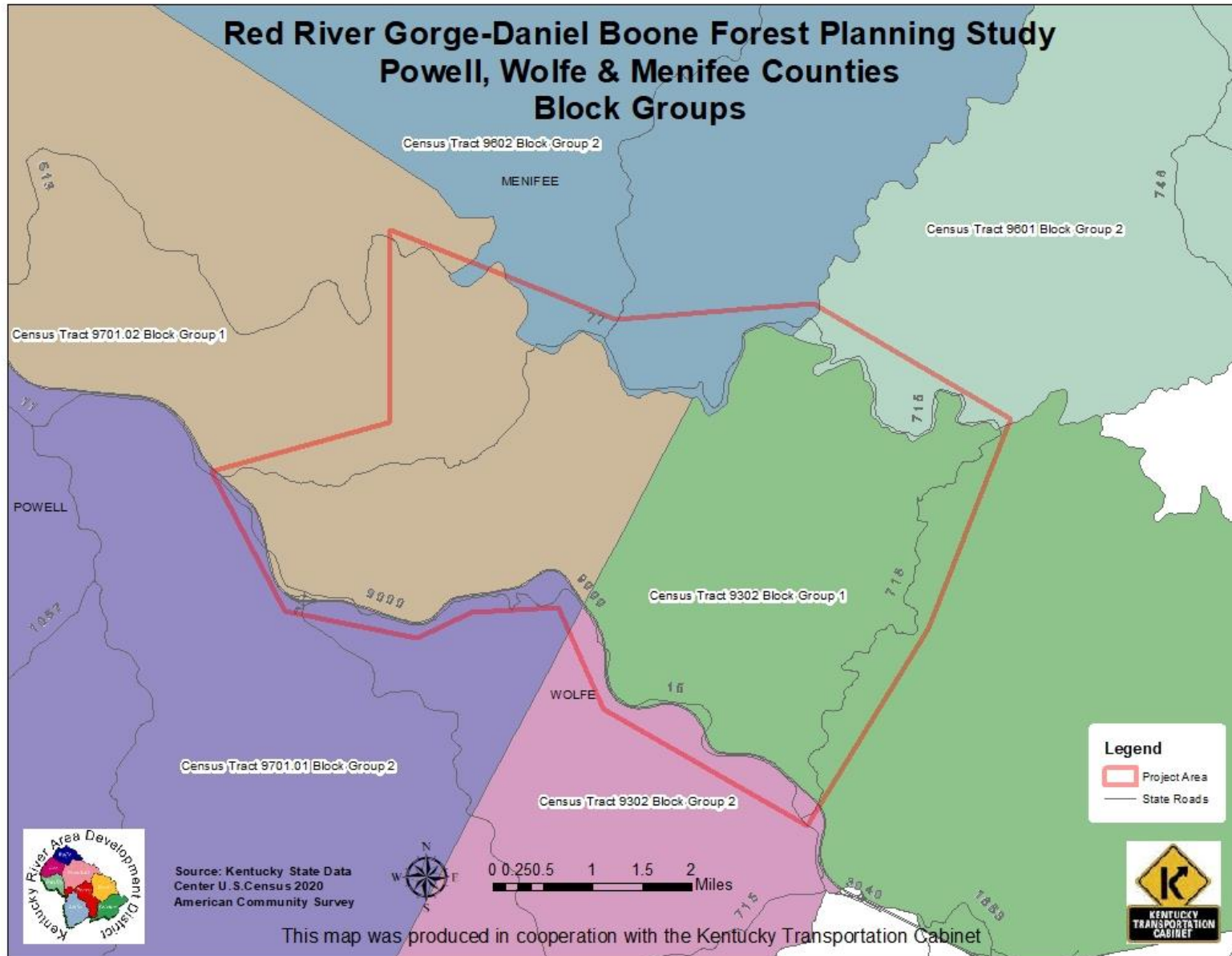
- B01001 - Sex by Age
- B03002 - Hispanic or Latino Origin by Race
- B16004 - Age by Language Spoken at Home by Ability to Speak English for the Population 5 Years and Over
- B17021 - Poverty Status of Individuals in the Past 12 Months by Living Arrangement
- C21007 - Age by Veteran Status by Poverty Status in the Past 12 Months by Disability Status

The data presented in this document is intended to highlight areas of concern that will require additional analysis should any project be advanced to future phases.

The Census tables in this report include the total number and percentages for minorities, elderly, low-income, LEP, and disabled population levels for the census tract block groups, counties, state, and nation. The project area is in three Area Development Districts: Kentucky River, Gateway and Bluegrass. For this reason, the data is not presented at a regional level. This report uses the population percentages for Menifee, Powell and Wolfe Counties as the reference threshold for identifying target populations. The numbers for the counties were selected as the reference threshold. The county numbers most likely provide a better snapshot of the overall population characteristics in the study area as opposed to the United States or state percentages.

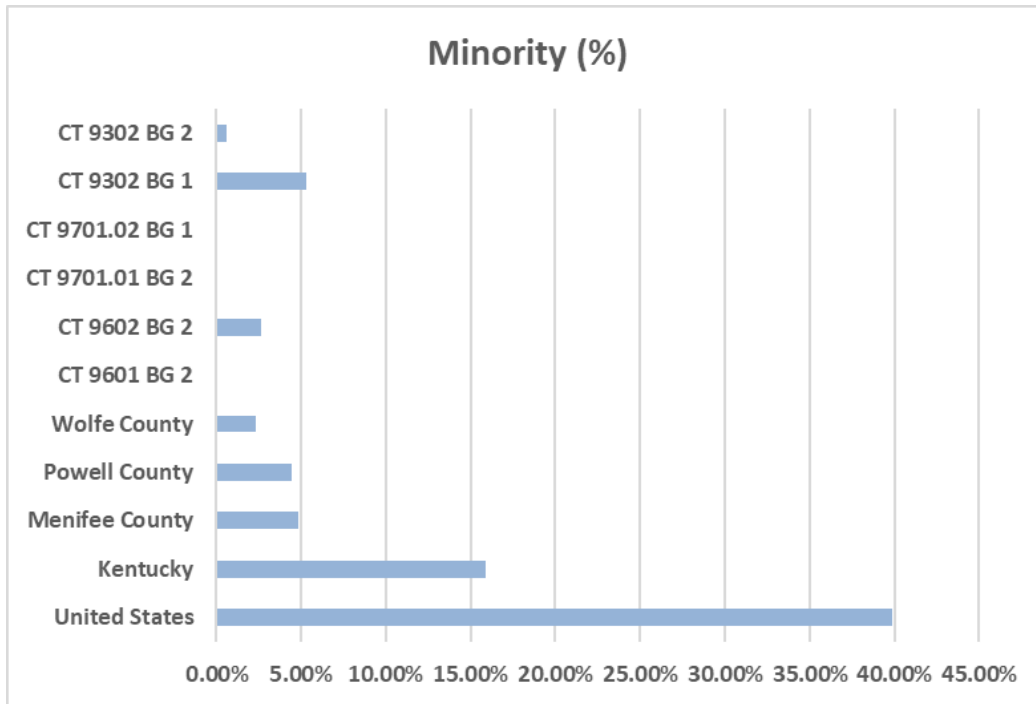
The methodologies used in this planning document are appropriate for identifying possible areas of concern in small urban areas and potential project corridors. However, during future phases of project development a more detailed and robust analysis would be required for the NEPA documentation when assessing the potential for adverse and disproportionate impacts to low-income and minority populations.





Study Findings

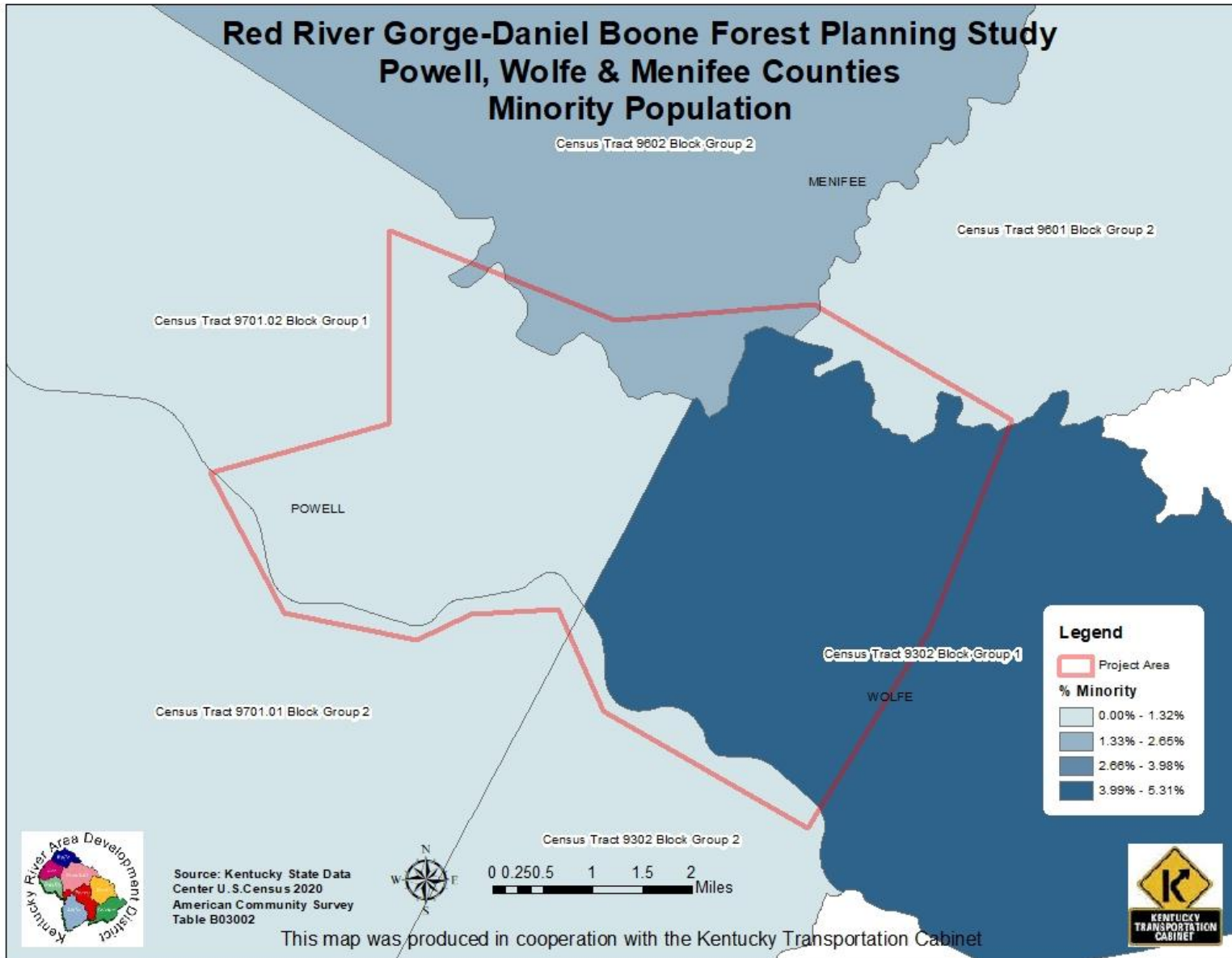
Population by Persons of Racial Minority Origin



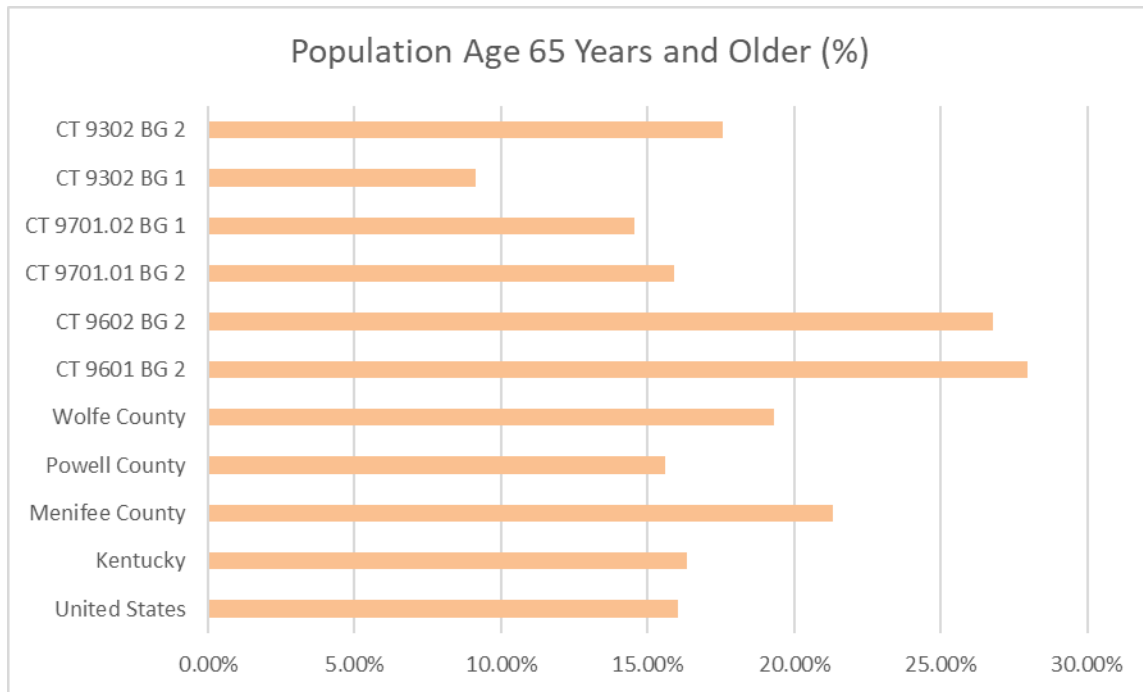
Racial minorities in the United States make up 39.91% of the population, but in Kentucky that percentage drops significantly to just 15.92%. Menifee, Powell and Wolfe Counties displays an even lower percentage of racial minorities than that of the state with 4.83%, 4.45% and 2.35%, respectively. In the project area, Block Group (BG) 1 of Census Tract (CT) 9302 has a minority population (5.31%) above the percentages for all three of the reference counties, but below the state and nation percentages.

	Total Population	Minority Population	Minority Population (%)
United States	326,569,308	130,317,933	39.91%
Kentucky	4,461,952	710,214	15.92%
Menifee County	6,463	312	4.83%
Powell County	12,283	546	4.45%
Wolfe County	7,188	169	2.35%
Census Tract 9601 Block Group 2	740	0	0.00%
Census Tract 9602 Block Group 2	1,027	27	2.63%
Census Tract 9701.01 Block Group 2	967	0	0.00%
Census Tract 9701.02 Block Group 1	2,064	0	0.00%
Census Tract 9302 Block Group 1	1,357	72	5.31%
Census Tract 9302 Block Group 2	803	5	0.62%

Source: US Census Bureau, 2016-2020 American Community Survey 5-Year Estimates Table B03002



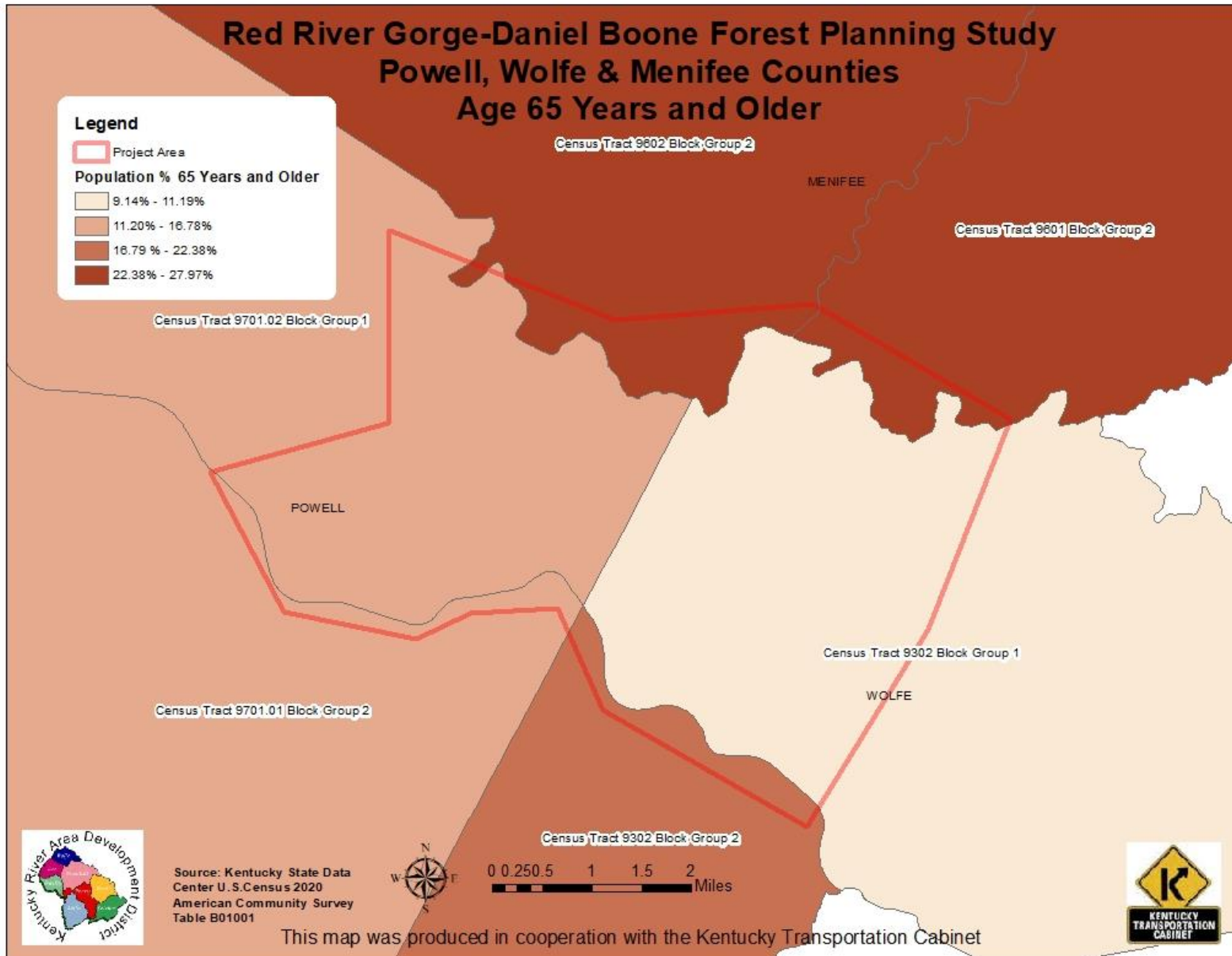
Population by Persons Age 65 Years and Older



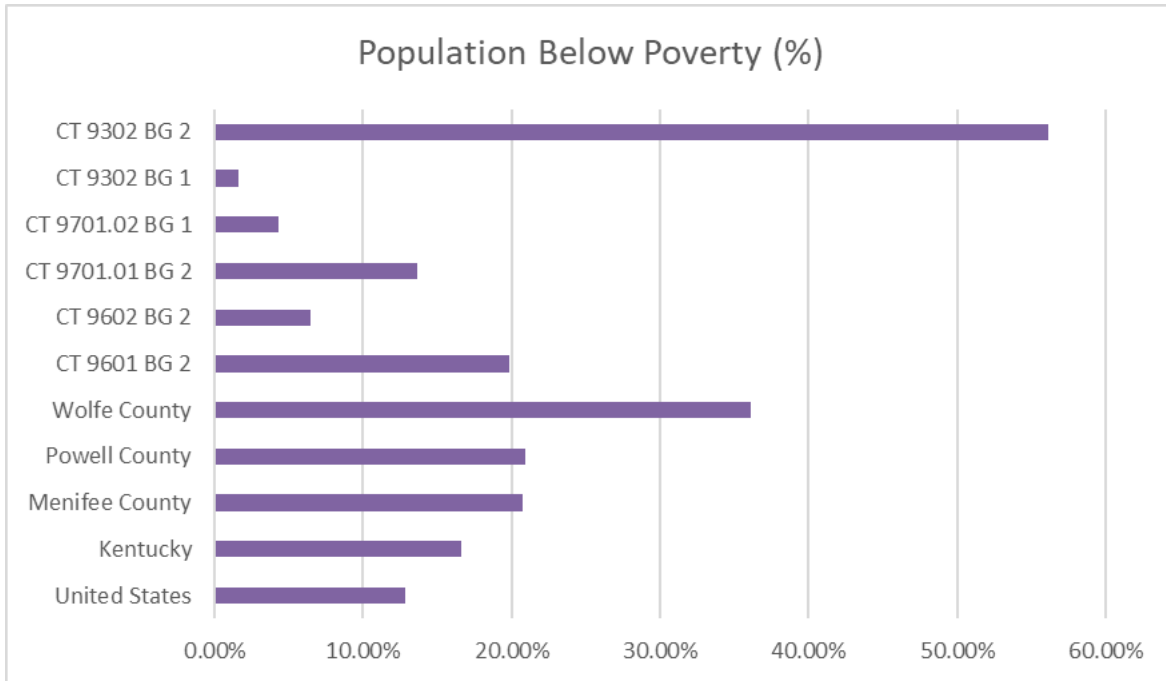
Block Group (BG) 2 of Census Tract (CT) 9601, Block Group (BG) 2 of Census Tract (CT) 9602 and Block Group 2 of Census Tract (CT) 9302 each have a higher percentage of elderly persons when compared to the other block groups in the study area, the State and the Nation. Block Group (BG) 2 of Census Tract (CT) 9302 has a lower percentage than that of Menifee County. Block Group (BG) 1 of Census Tract (CT) 9302 has a lower percentage of elderly persons than all of CTs/BGs in the study area, Counties, State and the Nation.

	Total Population	Population Age 65 Years and Older	Population Age 65 Years and Older (%)
United States	326,569,308	52,362,817	16.03%
Kentucky	4,461,952	729,928	16.36%
Menifee County	6,463	1,377	21.31%
Powell County	12,283	1,919	15.62%
Wolfe County	7,188	1,389	19.32%
Census Tract 9601 Block Group 2	740	207	27.97%
Census Tract 9602 Block Group 2	1,027	275	26.78%
Census Tract 9701.01 Block Group 2	967	154	15.93%
Census Tract 9701.02 Block Group 1	2,064	300	14.53%
Census Tract 9302 Block Group 1	1,357	124	9.14%
Census Tract 9302 Block Group 2	803	141	17.56%

Source: US Census Bureau, 2016-2020 American Community Survey 5-Year Estimates Table B01001



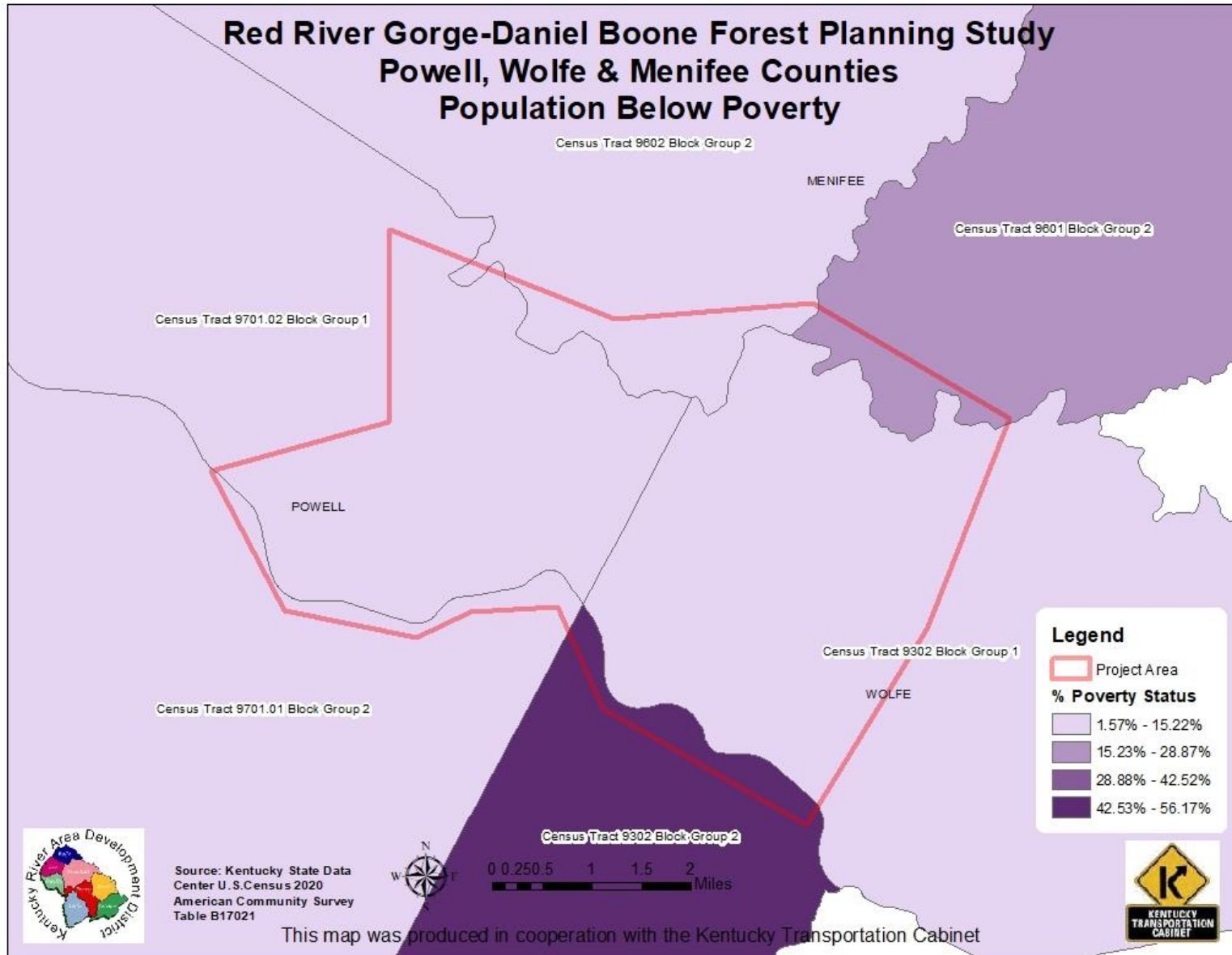
Population by Persons Below Poverty Level



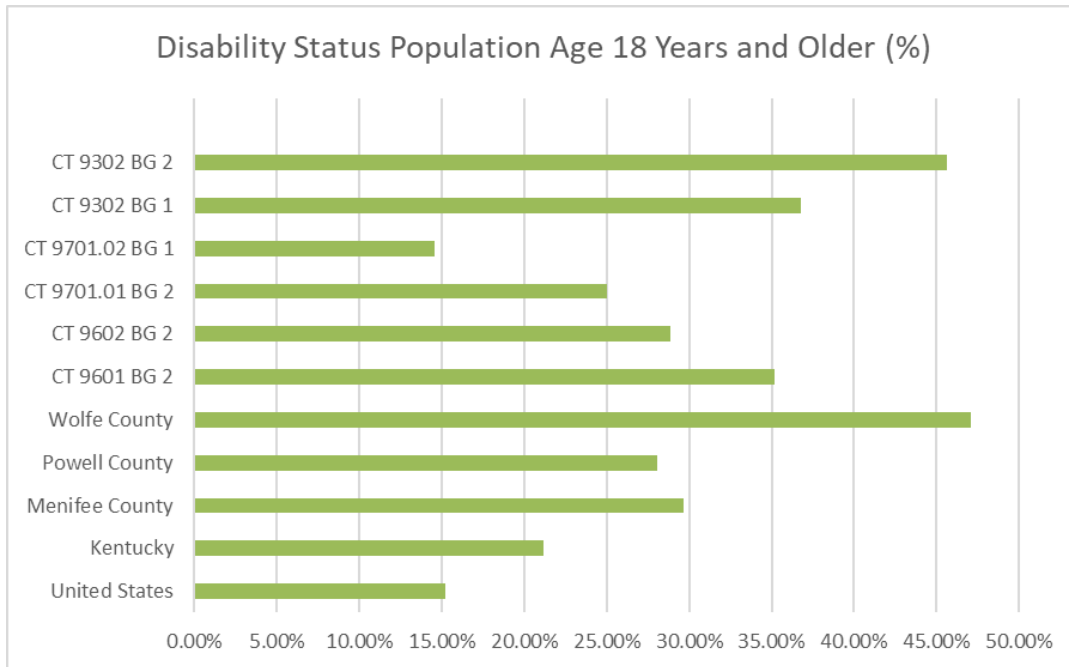
The percentage of persons living below the poverty level in Kentucky (16.61%) is higher than that of the United States (12.84%). Menifee, Powell and Wolfe Counties have higher percentages with 20.72%, 20.95% and 36.10%, respectively. Block Group (BG) 2 of Census Tract (CT) 9302 has a poverty level of 56.17%, which is a considerably higher percentage.

	Total Population	Population Below Poverty	Population Below Poverty (%)
United States	318,564,128	40,910,326	12.84%
Kentucky	4,322,881	717,895	16.61%
Menifee County	6,379	1,322	20.72%
Powell County	11,960	2,506	20.95%
Wolfe County	7,016	2,533	36.10%
Census Tract 9601 Block Group 2	740	147	19.86%
Census Tract 9602 Block Group 2	958	62	6.47%
Census Tract 9701.01 Block Group 2	967	132	13.65%
Census Tract 9701.02 Block Group 1	2,064	89	4.31%
Census Tract 9302 Block Group 1	1,335	21	1.57%
Census Tract 9302 Block Group 2	762	428	56.17%

Source: US Census Bureau, 2016-2020 American Community Survey 5-Year Estimates Table B17021



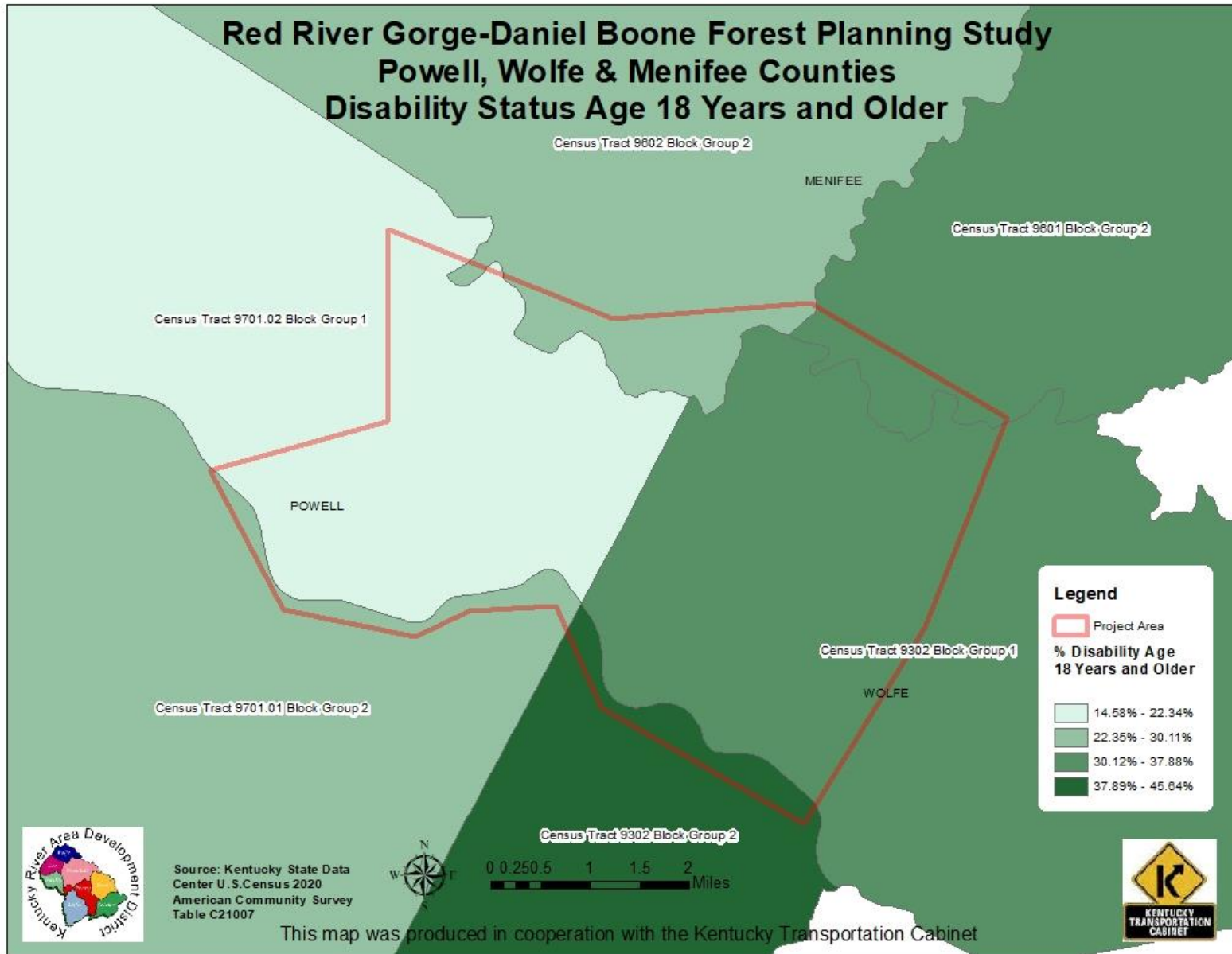
Population by Disability Status



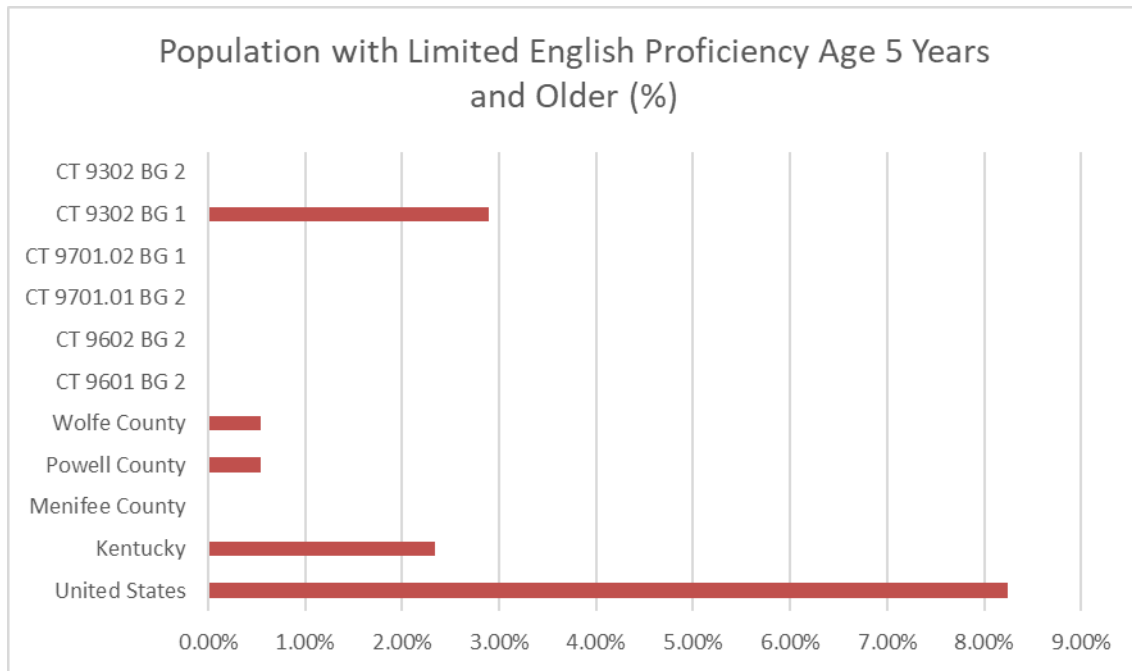
Kentucky had 21.19% percent of its population age 18 years and older with some type of disability. This is higher than the national percentage (15.25%). Data shows that the disability status in the project area ranges from 14.58% to 45.64%. The population of persons over 18 years with a disability in Menifee County (21.19%) is higher than that of the Nation and the same percentage as the State. Powell County (28.10%) and Wolfe County (47.11%) data is higher than both Kentucky and the United States.

	Total Population Age 18 Years and Older	Disability Status Population Age 18 Years and Older	Disability Status Population 18 Years and Older
United States	245,684,915	37,478,333	15.25%
Kentucky	3,330,918	705,961	21.19%
Menifee County	5,031	1,491	29.64%
Powell County	8,990	2,526	28.10%
Wolfe County	5,387	2,538	47.11%
Census Tract 9601 Block Group 2	691	243	35.17%
Census Tract 9602 Block Group 2	890	257	28.88%
Census Tract 9701.01 Block Group 2	600	150	25.00%
Census Tract 9701.02 Block Group 1	1,626	237	14.58%
Census Tract 9302 Block Group 1	872	321	36.81%
Census Tract 9302 Block Group 2	723	330	45.64%

Source: US Census Bureau, 2016-2020 American Community Survey 5-Year Estimates Table C21007



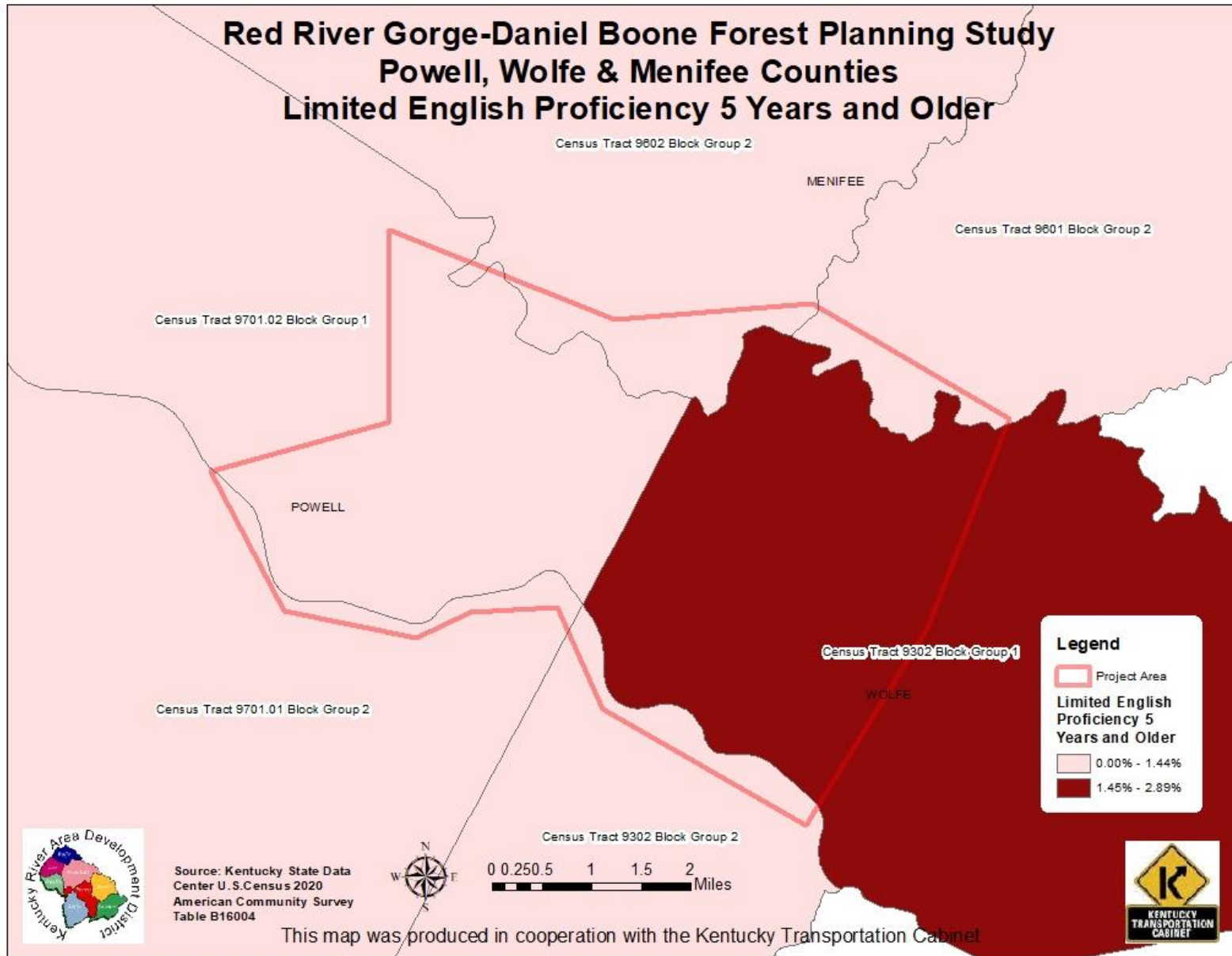
Population by Persons with Limited English Proficiency



Persons with Limited English Proficiency (LEP) in the United States make up 8.25% of the population, but in Kentucky that percentage decreases to just 2.34%. Powell and Wolfe Counties have an even lower percentage of persons with LEP than that of the State and United States, Menifee County is at 0.00%. Only one Block Group (BG) has a percentage of persons with limited English proficiency greater than one percent in the study area.

	Total Population Age 5 Years and Older	Population with Limited English Proficiency Age 5 Years and Older	Population with Limited English Proficiency Age 5 Years and Older (%)
United States	306,919,116	25,312,024	8.25%
Kentucky	4,188,377	97,819	2.34%
Menifee County	6,096	0	0.00%
Powell County	11,497	63	0.55%
Wolfe County	6,724	37	0.55%
Census Tract 9601 Block Group 2	740	0	0.00%
Census Tract 9602 Block Group 2	1,018	0	0.00%
Census Tract 9701.01 Block Group 2	840	0	0.00%
Census Tract 9701.02 Block Group 1	1,964	0	0.00%
Census Tract 9302 Block Group 1	1,281	37	2.89%
Census Tract 9302 Block Group 2	803	0	0.00%

Source: US Census Bureau, 2016-2020 American Community Survey 5-Year Estimates Table B16004



Conclusion

Population by Persons of Racial Minority Origin

Census Tract 9302 Block Group 1 percentage: Greater than Counties' percentages

Census Tract 9602 Block Group 2 percentage: Greater than Wolfe County percentage

Population by Persons Age 65 Years and Older

Census Tract 9601 Block Group 2 and Census Tract 9602 Block Group 2 percentages: Greater than Counties' percentages, State's percentage and Nation's percentage

Census Tract 9302 Block Group 2 percentage: Greater than Powell County percentage, State's percentage and Nation's percentage

Population by Persons Below Poverty Level

Census Tract 9601 Block Group 2 percentage: Greater than State's percentage and Nation's percentage

Census Tract 9701.01 Block Group 2 percentage: Greater than Nation's percentage

Census Tract 9302 Block Group 2 percentage: Greater than Counties' percentages, State's percentage and Nation's percentage

Population by Disability Status

Census Tract 9601 Block Group 2, Census Tract 9302 Block Group 1 and Census Tract 9302 Block Group 2 percentages: Greater than Menifee and Powell Counties' percentages, State's percentage and Nation's percentage

Census Tract 9602 Block Group 2 percentage: Greater than Powell County percentage, State's percentage and Nation's percentage

Census Tract 9701.01 Block Group 2 percentage: Greater than State's percentage and Nation's percentage

Persons with Limited English Proficiency

Census Tract 9302 Block Group 1 percentage: Greater than Counties' percentages and State's percentage

During future phases of project development, a more detailed and robust analysis would be required for the NEPA documentation when assessing the potential for adverse and disproportionate impacts to those with disabilities, poverty status, and minority populations.

Appendix: Methodology from KYTC

METHODOLOGY FOR ASSESSING UNDERSERVED POPULATIONS INCLUDING ENVIRONMENTAL JUSTICE, TITLE VI, AGE AND DISABILITY IN PLANNING STUDIES

Updated May 2022

Cover Page

Title: Insert specific study type/area

Subtitle: Socioeconomic Study

Date:

Author:

Analysis

Environmental Justice refers to the fair treatment of all people regardless of race, color, national origin or income. Specifically, agencies must demonstrate meaningful involvement with the above stated groups with respect to development, implementation and enforcement of environmental laws, regulations and policies. Environmental Justice analysis is undertaken for any study that may result in impacts on a minority and/or low income population that has a federal nexus (funding or approval).

Additionally KYTC works to identify potential populations of the Elderly, Disabled, Limited English Proficiency and Limited Transportation Options that may be impacted in or near the Affected Community (AC) should highway improvements take place in the future.

Examples of these studies include, but are not limited to:

- Corridor Studies
- Traffic Studies
- Small Urban Area Studies
- Feasibility Studies
- Interchange Justification Studies
- Interchange Modification Reports

Affected Community with potential environmental justice impacts are determined by locating populations of minority, low-income, elderly, disabled, and limited English proficiency and calculating their percentage in the area relative to a reference community of comparison (COC).

Communities of comparison:

- The county percentage
- Kentucky percentage
- Block groups within reasonable proximity of the study area
- United States
- ADD Region

The demographics of the study area should be defined using block group data accessed via the American Community Survey 5 year data. KYTC will work in conjunction with the State Data Center to provide pertinent spatial data on a yearly basis for the following, as the update schedule allows:

- Minority
- Low-income
- Elderly
- Disabled populations
- Limited English Proficiency